

Vanguard Institutional Index I

VINIX

Release date: 3-31-22

Morningstar Category:
Large Blend

Overall Morningstar Rating:
★★★★★

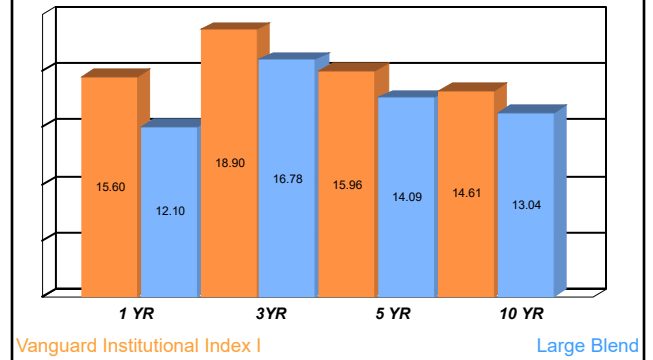
Standard Index: S&P 500 TR USD
Category Index: Russell 1000 TR USD

The investment seeks to track the performance of the S&P 500 Index that measures the investment return of large-capitalization stocks. The fund employs an indexing investment approach designed to track the performance of the S & P 500 Index, a widely recognized benchmark of U.S. stock market performance that is dominated by the stocks of large U.S. companies. The advisor attempts to replicate the target index by investing all, or substantially all, of its assets in the stocks that make up the index, holding each stock in approximately the same proportion as its weighting in the index.

RISK AND RETURN

| | 1 Year | 3 Year | 5 Year | 10 Year |
|----------------|--------|-----------|-----------|---------|
| Total Return | 15.60 | 18.90 | 15.96 | 14.61 |
| Cat Avg Return | 12.10 | 16.78 | 14.09 | 13.04 |
| MStar Rating | -- | ★★★★★ | ★★★★★ | ★★★★★ |
| MStar Risk | -- | Average | Average | Average |
| MStar Return | -- | Above Avg | Above Avg | High |
| Std Deviation | 13.63 | 17.76 | 15.78 | 13.24 |
| Sharpe Ratio | 1.12 | 1.03 | 0.95 | 1.05 |
| % Rank Cat | 17 | 19 | 15 | 9 |

FUND PERFORMANCE VS. CATEGORY



PORTFOLIO ANALYSIS 2-28-22

| Sector Weightings Basic Materials 2.25 Consumer Cyclical 11.64 Financial Services 13.69 Real Estate 2.61 Communication Services 9.61 Energy 3.67 Industrials 8.13 Technology 25.55 Consumer Defensive 6.59 Healthcare 13.37 Utilities 2.56 | Stocks % 2.25 11.64 13.69 2.61 9.61 3.67 8.13 25.55 6.59 13.37 2.56 | Composition % Cash 0.32 U.S. Stocks 98.68 Non U.S. Stocks 1.00 Bonds -- Other -- | Total Assets: \$278,091.80 mil # of Stock Holdings: 505 # of Bond Holdings: 0 Total # of Holdings: 508 Turnover Ratio: 3% | Equity Style Value Blend Growth Large Mid Small | | | Fixed Income Style Short Int Long High Med Low | | | | | | | | | | | | | | | | | | |
|------------------------------------------------------------------------------------------------------------------------------------------------------------------------------------------------------------------------------------------------------------------------------------|-------------------------------------------------------------------------------------------------------------|--------------------------------------------------------------------------------------------------------|----------------------------------------------------------------------------------------------------------------------------------------------|-------------------------------------------------------------------------------------------------------------------------------------------------------------------------------------------------------------------------------------------------------------------------------------------------------------------------------------------------|-------|--------|-------------------------------------------------------------------|----------|-------|--------------|------|----------------|-------|-------|------|------|------|------|------|------|------|-----------|-------|-------|-------|
| | | | | Top 10 Holdings | | | | | | | | | | | | | | | | | | | | | |
| | | | | % of Net Assets | | | | | | | | | | | | | | | | | | | | | |
| | | | | Apple Inc 6.92 Microsoft Corp 6.03 Amazon.com Inc 3.60 Alphabet Inc Class A 2.18 Alphabet Inc Class C 2.03 Tesla Inc 1.90 NVIDIA Corp 1.64 Berkshire Hathaway Inc Class B 1.58 Meta Platforms Inc Class A 1.34 | | | | | | | | | | | | | | | | | | | | | |
| | | | | MPT Statistics (Russell 1000 TR USD) | | | | | | | | | | | | | | | | | | | | | |
| | | | | <table border="1"> <thead> <tr> <th></th> <th>3 Yr</th> <th>5 Yr</th> <th>10 Yr</th> </tr> </thead> <tbody> <tr> <td>Alpha</td> <td>0.62</td> <td>0.44</td> <td>0.33</td> </tr> <tr> <td>Beta</td> <td>0.97</td> <td>0.97</td> <td>0.98</td> </tr> <tr> <td>R-Squared</td> <td>99.67</td> <td>99.70</td> <td>99.67</td> </tr> </tbody> </table> | | | | | | | 3 Yr | 5 Yr | 10 Yr | Alpha | 0.62 | 0.44 | 0.33 | Beta | 0.97 | 0.97 | 0.98 | R-Squared | 99.67 | 99.70 | 99.67 |
| | | | | | 3 Yr | 5 Yr | 10 Yr | | | | | | | | | | | | | | | | | | |
| | | | | Alpha | 0.62 | 0.44 | 0.33 | | | | | | | | | | | | | | | | | | |
| | | | | Beta | 0.97 | 0.97 | 0.98 | | | | | | | | | | | | | | | | | | |
| | | | | R-Squared | 99.67 | 99.70 | 99.67 | | | | | | | | | | | | | | | | | | |
| Regional Exposure | | | | | | | | | | | | | | | | | | | | | | | | | |
| <table border="1"> <thead> <tr> <th>Region</th> <th>Stocks %</th> </tr> </thead> <tbody> <tr> <td>Americas</td> <td>98.68</td> </tr> <tr> <td>Greater Asia</td> <td>0.06</td> </tr> <tr> <td>Greater Europe</td> <td>0.95</td> </tr> </tbody> </table> | | | | | | Region | Stocks % | Americas | 98.68 | Greater Asia | 0.06 | Greater Europe | 0.95 | | | | | | | | | | | | |
| Region | Stocks % | | | | | | | | | | | | | | | | | | | | | | | | |
| Americas | 98.68 | | | | | | | | | | | | | | | | | | | | | | | | |
| Greater Asia | 0.06 | | | | | | | | | | | | | | | | | | | | | | | | |
| Greater Europe | 0.95 | | | | | | | | | | | | | | | | | | | | | | | | |

OPERATIONS & EXPENSES

Fund Family: Vanguard

Manager/Tenure: Butler 21.26

Prospectus Net Expense Ratio%: 0.04

Inception Date: 7/31/1990 12:00:00

Fund fact sheet not valid without Disclaimer Page.

Past performance is no guarantee of future results. Investment return and value of shares will fluctuate, so those shares, when redeemed, may be worth more or less than their original cost. To obtain a Fund prospectus, which contains important information about Fund objectives, investment policies, fees and expenses, contact your INTRUST representative or plan sponsor, or call 1-866-412-9026. Shares of the Fund are not FDIC insured, are not deposits of, or guaranteed by, INTRUST Bank, N.A. and involve investment risk, including possible loss of principal.

Disclaimer

© 2016 Morningstar, Inc. All Rights Reserved. The information contained herein (including information contained in the Licensee Fact Sheets): (1) is proprietary to Morningstar and/or its content providers; (2) may not be copied or distributed; and (3) is not warranted to be accurate, complete or timely. Neither Morningstar nor its content providers are responsible for any damages or losses arising from any use of this information. Past performance is no guarantee of future results.

Morningstar Rating

For each fund with at least a three-year history, Morningstar calculates a Morningstar Rating™ based on a Morningstar Risk-Adjusted Return™ measure that accounts for variation in a fund's monthly performance (including the effects of sales charges, loads, and redemption fees), placing more emphasis on downward variations and rewarding consistent performance. The top 10% of funds in each category receive 5 stars, the next 22.5% receive 4 stars, the next 35% receive 3 stars, the next 22.5% receive 2 stars and the bottom 10% receive 1 star. (Each share class is counted as a fraction of one fund within this scale and rated separately, which may cause slight variations in the distribution percentages.) The Overall Morningstar Rating for a fund is derived from a weighted average of the performance figures associated with its three-, five- and ten-year (if applicable) Morningstar Rating metrics. Morningstar Rating is for this share class only; other classes may have different performance characteristics.

ETFs

The Morningstar Rating™ is provided for those exchange-traded funds ("ETFs") with at least a three-year history. Ratings are based on the ETF's Morningstar Risk-Adjusted Return measure which accounts for variation in monthly performance, placing more emphasis on downward variations and rewarding consistent performance. An ETF's risk-adjusted return includes a brokerage commission estimate. This estimate is intended to reflect what an average investor would pay when buying or selling an ETF. PLEASE NOTE, this estimate is subject to change and the actual brokerage commission an investor pays may be higher or lower than this estimate. Morningstar compares each ETF's risk-adjusted return to the open-end mutual fund rating breakpoints for that category. Consistent with the open-end mutual fund ratings, the top 10% of ETFs in each category receive 5 stars, the next 22.5% receive 4 stars, the next 35% receive 3 stars, the next 22.5% receive 2 stars and the bottom 10% receive 1 star. The overall rating for an ETF is based on a weighted average of the time-period ratings (e.g., the ETF's 3, 5, and 10 year rating).. The determination of an ETF's rating does not affect the retail open end mutual fund data published by Morningstar.

Morningstar Rating for Load-Waived A-Shares

For each fund with at least a three-year history, Morningstar calculates a Morningstar Rating™ based on how a fund ranks on a Morningstar Risk-Adjusted Return measure against other funds in the same category. This measure takes into account variations in a fund's monthly performance after adjusting for sales loads (except for load-waived A shares) redemption fees, and the risk-free rate, placing more emphasis on downward variations and rewarding consistent performance. The top 10% of funds in each category receive 5 stars, the next 22.5% receive 4 stars, the next 35% receive 3 stars, the next 22.5% receive 2 stars and the bottom 10% receive 1 star. The Overall Morningstar Rating for a fund is derived from a weighted average of the ratings for the three-, five- and ten-year (if applicable) time periods. Load- waived A share star ratings do not include any front-end sales load and are intended for those investors who have access to such purchase terms (e.g., plan participants of a defined contribution plan). Not all A share mutual funds for which Morningstar calculates a load-waived A share star rating may actually waive their front-end sales load. Therefore, Morningstar strongly encourages investors to contact their investment professional to determine whether they are eligible to purchase the A share without paying the front load . The Morningstar Rating may differ among share classes of a mutual fund as a result of different sales loads and/or expense structure.

Morningstar Rating based on Extended Performance

Please note, some of the Morningstar proprietary calculations, including the Morningstar Rating™, are not customarily calculated based on adjusted historical returns. The evaluation of this investment does not affect the retail mutual fund data published by Morningstar . For each retail mutual fund with at least a three-year history, Morningstar calculates a Morningstar Rating™ based on a Morningstar Risk-Adjusted Return measure that accounts for variation in a fund's monthly performance (including the effects of sales charges, loads, and redemption fees), placing more emphasis on downward variations and rewarding consistent performance. The top 10% of funds in each category receive 5 stars, the next 22.5% receive 4 stars, the next 35% receive 3 stars, the next 22.5% receive 2 stars and the bottom 10% receive 1 star. (Each share class is counted as a fraction of one fund within this scale and rated separately, which may cause slight variations in the distribution percentages.) The Overall Morningstar Rating for a retail mutual fund is derived from a weighted average of the performance figures associated with its three-, five- and ten-year (if applicable) Morningstar Rating metrics. This investment's independent Morningstar Rating metric is then compared against the retail mutual fund universe breakpoints to determine its hypothetical rating.

Morningstar Rating for Separate Accounts

Disclaimer

The Morningstar Rating for separate accounts, commonly called the star rating, is a measure of a separate account's risk-adjusted return, relative to other separate accounts in the same Morningstar Category. Separate accounts are rated from 1 to 5 stars, with the best performers receiving 5 stars and the worst performers receiving 1 star. Separate accounts are rated for up to three periods (three, five, and 10 years), and ratings are recalculated each quarter. The Morningstar Rating for separate accounts uses an enhanced risk-adjusted return measure, which accounts for all variations in a separate account's monthly performance, with more emphasis on downward variation. Separate accounts are ranked against others in the same category and stars are assigned as follows: Top 10% 5 stars, Next 22.5% 4 stars, Middle 35% 3 stars, Next 22.5% 2 stars, Bottom 10% 1 star. Fees for separate accounts can vary widely and are negotiated between the asset manager, the separate account program sponsor or advisor, and the investor. Morningstar has chosen to employ the AIMR-approved standard of gross-of-fees performance (before fees have been taken out) to compare separate accounts. Net-of-fees calculations often deduct the highest theoretical fees that an investor may pay. The Morningstar Rating uses an enhanced risk-adjusted return measure based on "expected utility theory," which accounts for all variations in a separate account's monthly performance, with more emphasis on downward variation. Morningstar will not calculate ratings for categories or time periods that contain fewer than five separate accounts. Each investor in the same separate account can experience slightly different total returns, because investors have different account preferences and restrictions. Therefore, all separate account performance data is reported to Morningstar as a "composite" of similarly managed portfolios. Separate accounts that do not have ratings can be divided into two groups: those that do not qualify to be rated and those that did not participate. A separate account will not get a Morningstar Rating if: It is less than three years old, the firm is not AIMR-compliant, the category contains fewer than five separate accounts that are eligible for a rating.

Morningstar Rating for Group Variable Annuities

The Morningstar Rating™ is provided for those group variable annuities with at least a three-year history. Ratings are based on the group variable annuity's Morningstar Risk-Adjusted Return measure which accounts for variation in monthly performance, placing more emphasis on downward variations and rewarding consistent performance. Morningstar compares each group variable annuity's risk-adjusted return to the open-end mutual fund rating breakpoints for that category. The group variable annuity Morningstar Rating does not affect the retail mutual fund data published by Morningstar. Consistent with the open-end mutual fund ratings, the top 10% of group variable annuities in each category receive 5 stars, the next 22.5% receive 4 stars, the next 35% receive 3 stars, the next 22.5% receive 2 stars and the bottom 10% receive 1 star. The Overall Morningstar Rating for each group variable annuity is derived from a weighted average of the performance figures associated with its three-, five- and ten-year (if applicable) Morningstar Rating metrics.

Morningstar Style Box™

The Morningstar Style Box™ reveals a fund's investment strategy. For equity funds the vertical axis shows the market capitalization of the stocks owned and the horizontal axis shows investment style (value, blend or growth). For fixed-income funds the vertical axis shows the average credit quality of the bonds owned, and the horizontal axis shows interest rate sensitivity as measured by a bond's duration (short, intermediate or long).

Morningstar Ownership Zone™

The Morningstar Ownership Zone™ provides detail about a portfolio's equity investment style by showing the range of stock sizes and styles. A portfolio's Ownership Zone™ is derived by plotting each stock in the fund's portfolio within the proprietary Morningstar Style Box™. The shaded area represents the center 75% of the fund's assets, and it provides an intuitive visual representation of the area of the market in which the fund invests. A "centroid" plot in the middle of the Ownership Zone represents the weighted average of all the fund's holdings. A fund that is concentrated will have a small ownership zone relative to the area of the style box, and broadly diversified fund will have an ownership zone that stretches across many sizes and style. Over a period of time, the shape and location of a fund's ownership zone may vary.